

Project	Date
Part	Type

About the BLRD

The BLRD recessed LED luminaire is perfect for office spaces, offering a clean, professional appearance with energy-efficient performance. ETL certified and easy to install makes this product an excellent choice for retrofits and new installations.

Specifications

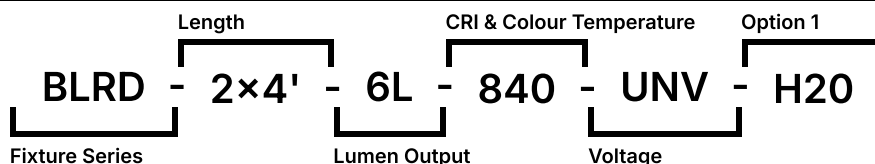
Supported Voltage	120-277V, 347V, 120-347V
Available Sizes	1x4, 2x2, 2x4 (all metric and custom sizes available on request)
Lifetime	L70 of 150,000+ hours, L90 of 45,000+ hours
Operating Temperature	-20°C/+25°C (-40°/+40°C upgrade)
Lumens	2L (2000lm) to 10L (10000lm)
CCT	2700K, 3000K, 3500K, 4000K, 5000K, 6500K
CRI	80+ standard, 90+ and 95+ available
Dimming	0-10V Standard
Mounting	Recessed lay-in fixture for T-Bar Ceilings. Holes provided for chain or hanger, and wire mounting support for T-Bar ceilings

Approvals

- ETL Listed
- Dry and Damp Environment Rated

Ordering Information

Fill in the fields below with your product selections. If you need help with this section, [contact your local sales professional](#).



1	2		3		4		5			
BLRD										
Series		Length & Lumen Output		CRI		CCT		Voltage		
BLRD	1x4' - 2L	2000 lm	2x4' - 3.5L	3500 lm	8	80	27	2700K	UNV	120-277V
	1x4' - 2.5L	2500 lm	2x4' - 4L	4000 lm	9	90+	30	3000K	347	347V
	1x4' - 3L	3000 lm	2x4' - 4.5L	4500 lm	1	95+	35	3500K	UN3	120-347V
	1x4' - 3.5L	3500 lm	2x4' - 5L	5000 lm			40	4000K		
	1x4' - 4L	4000 lm	2x4' - 5.5L	5500 lm			50	5000K		
	1x4' - 4.5L	4500 lm	2x4' - 6L	6000 lm			65	6500K		
	1x4' - 5L	5000 lm	2x4' - 6.5L	6500 lm						
	2x2' - 2L	2000 lm	2x4' - 7L	7000 lm						
	2x2' - 2.5L	2500 lm	2x4' - 7.5L	7500 lm						
	2x2' - 3L	3000 lm	2x4' - 8L	8000 lm						
	2x2' - 3.5L	3500 lm	2x4' - 8.5L	8500 lm						
	2x2' - 4L	4000 lm	2x4' - 9L	9000 lm						
	2x2' - 4.5L	4500 lm	2x4' - 9.5L	9500 lm						
	2x2' - 5L	5000 lm	2x4' - 10L	10000 lm						
	2x4' - 3L	3000 lm								

6

Options

Lenses

BLANK | Frosted Acrylic

Dimming

B11 | 0-10V Dimming Leads
 B12 | Line Voltage Dimming
 B27 | Dim-to-off Driver
 B** | Other Options Available

Controls

WC10 | Encelium Wireless Controls
 WC18 | NX Wireless Controls
 WC19 | Avi-on Wireless Controls
 WC22 | JDRF Wireless Controls

Motion Sensors

WX15 | Internal Dimming Low Voltage Microwave Sensor
 WC20 | Leviton Low-Voltage Sensor
 W** | Other Options Available

Emergency Driver

B17 | UL924 10W Battery Back-up
 F8 | UL924 Emergency Relay

Air Handling

H20 | Housing with Passive Air Handling
 H24 | Housing with Active Air Handling

Finish

BLANK | Standard Low Reflectance White
 C5 | Matte Black
 CUSTOM | Custom Colour Choice

Packaging

BLANK | Individually Boxed on Pallets
 P0 | Bulk Packaging
 P** | Other Options Available

Mounting

M15 | Surface Mount Kit (packaged separately)
 BLANK | 15/16" T-Bar
 TB39 | 9/16" T-Bar
 TB39S | 9/16" T-Bar (Slotted)
 H40 | Drywall Kit (packaged separately)


Warranty

CL7 | 10-Year Comprehensive Warranty Upgrade


Documentation and Resources


All files and resources are available on our website for download. Files and resources are also embedded as links in this document, listed below. Additional files may be available upon request.


Please contact your local sales agent [here](#) or contact sales@bjtake.com for more information.

 BLRD Specification Sheet, 2025

 BLRD - Installation Instructions






 BLRD-1x4-5L-840-L18.ies

 BLRD-1x4-7L-840-L18.ies

 BLRD-2x4-6L-840-L18.ies

Certifications and Listings

Certifications that apply to this fixture and its possible configurations are listed here. More information available upon request.

Icon	Description
	Wireless Controls Available
	90 and 95+ CRI Options Available
	120-347V(UN3) Available
	ETL Listed
	Passive/Active Air Handling Options

Usage Applications

This fixture can be used in a variety of applications, and is ideal for the following:

Usage Application
Hospitals
Offices
Schools

Warranty Statement

BJ Take products are tested and/or inspected prior to being packaged for shipment and are guaranteed from the day the product is shipped for a period of ten-year LED chip warranty and a five-year comprehensive component warranty. This can be upgraded to a ten-year comprehensive warranty on request.

Wattage Information

Below are the wattage tables for all size formats of the BLRD.

BLRD 1x4' Wattage

Size	Lumen Output	Fixture Wattage
14	2.0	14.8
14	2.5	18.4
14	3.0	22.1
14	3.5	25.8
14	4.0	29.5
14	4.5	33.2
14	5.0	36.8

BLRD 2x2' Wattage

Size	Lumen Package	Wattage
22	2.5	19.8
22	3.0	24.1
22	3.5	28.4
22	4.0	33.1
22	4.5	37.9
22	5.0	42.7

BLRD 2x4' Wattage

Size	Lumen Package	Wattage
24	3.0	21.7
24	3.5	25.3
24	4.0	29.0
24	4.5	32.7
24	5.0	36.3
24	6.0	43.7
24	7.0	51.0
24	8.0	58.4
24	9.0	65.7
24	10.0	73.0

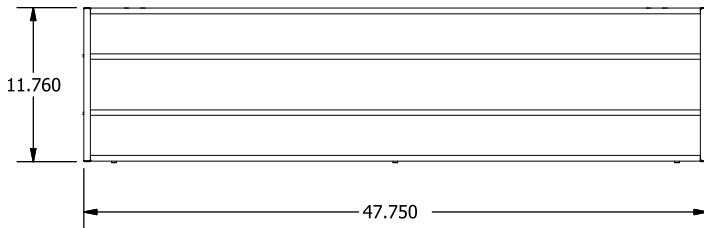
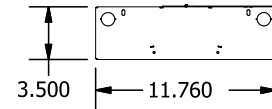
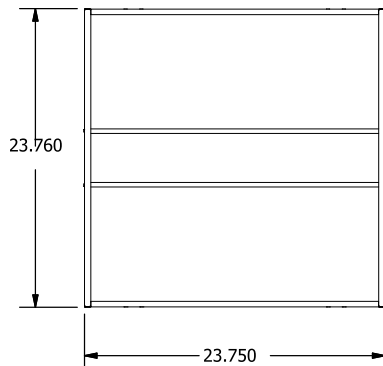
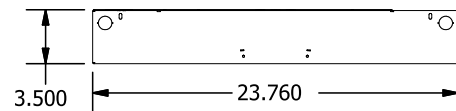
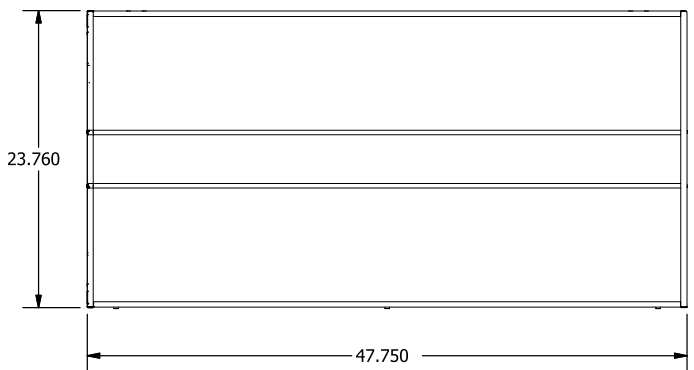
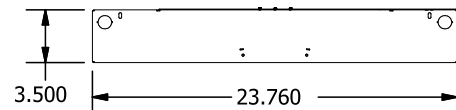
BLRD 2x4' Light Loss Factor (LLF)

CCT	Output%
2700K	92.95%
3000K	95.51%
3500K	96.80%
4000K	100%
5000K	101.28%
90CRI	84.72%

* Actual lumen output may vary

Dimension Information

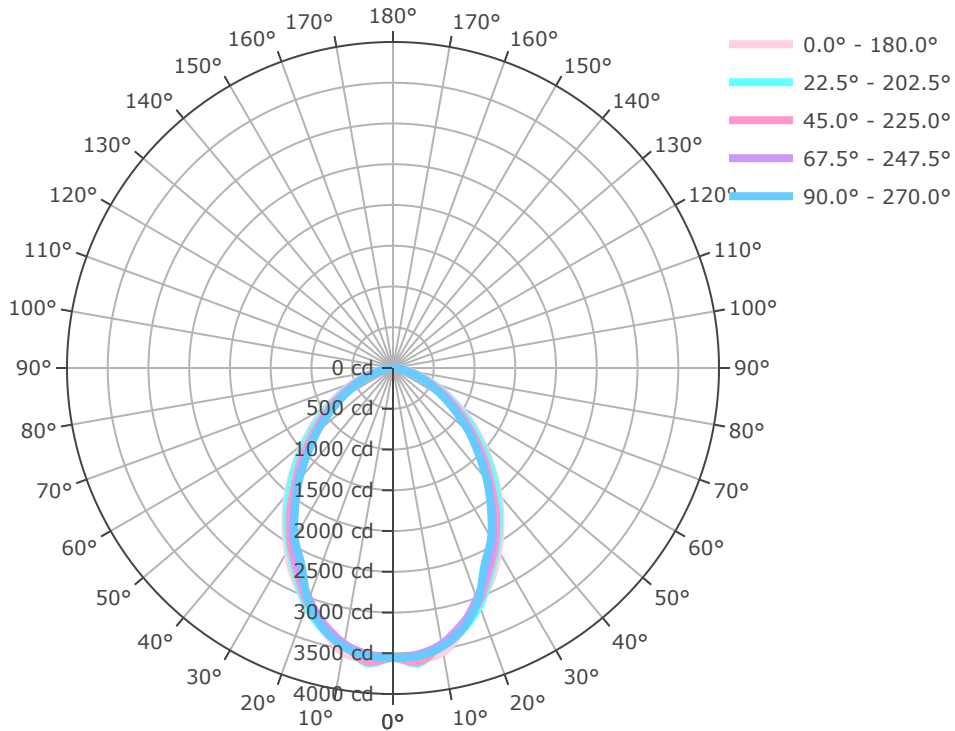
Below you will find the dimensions for both sizes of the BLRD.

BLRD 1x4'**End Dimensions****BLRD 2x2'****End Dimensions****BLRD 2x4'****End Dimensions**

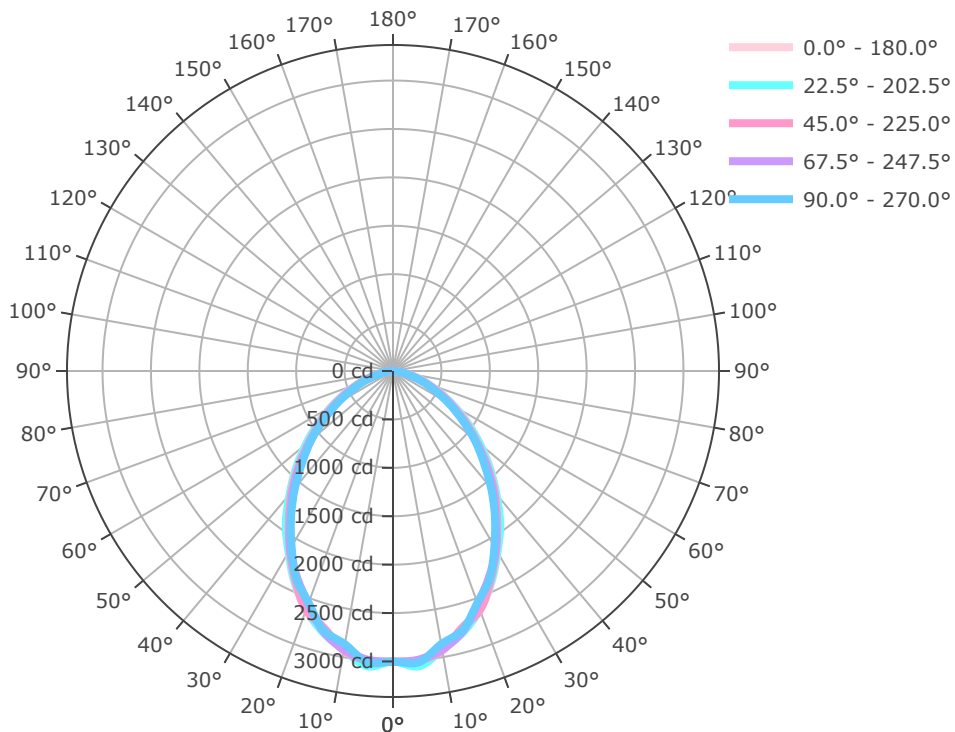
* Drawings aren't to scale

* Standard tolerances apply

* Specifications may change without notice

BLRD-1X4-7L-840-L18

Mtg Height	Light Level	Beam Diameter
6.0 ft	98.8 fc	11.5 ft
8.0 ft	55.6 fc	15.4 ft
10.0 ft	35.6 fc	19.2 ft
12.0 ft	24.7 fc	23.0 ft
14.0 ft	18.1 fc	26.9 ft
16.0 ft	13.9 fc	30.7 ft

BLRD-2X4-6L-840-L18

Mtg Height	Light Level	Beam Diameter
6.0 ft	83.4 fc	11.3 ft
8.0 ft	46.9 fc	15.1 ft
10.0 ft	30.0 fc	18.9 ft
12.0 ft	20.8 fc	22.6 ft
14.0 ft	15.3 fc	26.4 ft
16.0 ft	11.7 fc	30.2 ft

Gallery Information

Below you will find images of relevant products and configurations for the BLRD.

